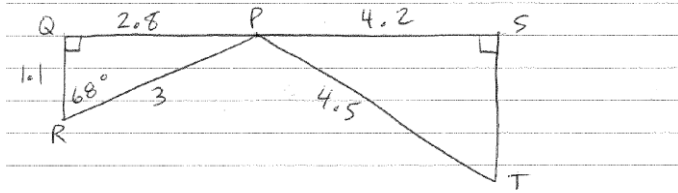


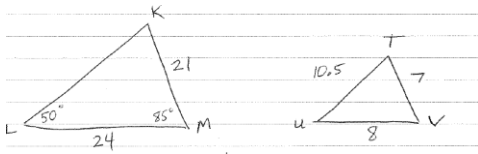
Similar Polygons – Practice

1. These triangles are similar:



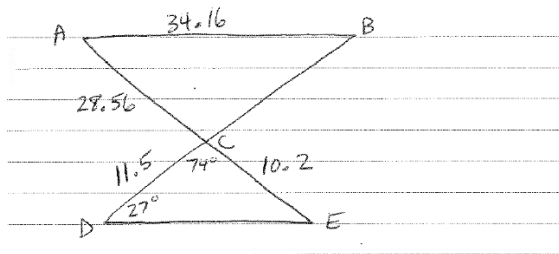
- Find the length of ST
- Find the measure of $\angle SPT$ and $\angle QPR$

2) These triangles are similar:



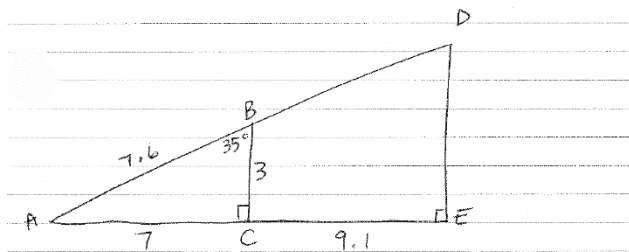
- Find the length of LK
- Find the measure of $\angle K$ and $\angle U$

3) These triangles are similar:



- Find the length of BC and DE
- Find the measure of $\angle E$ and $\angle A$

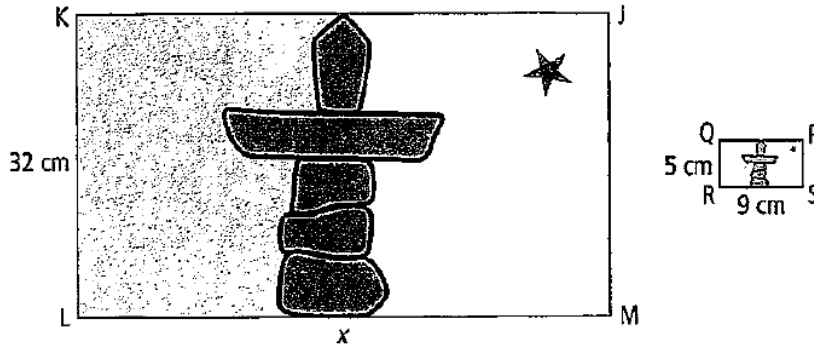
4) These triangles are similar:



- What is the measure of $\angle A$ and $\angle D$
- What is the length of BD and DE

5)

Jason wants to make an enlargement of the flag of Nunavut. He knows that the two rectangles JKLM and PQRS are similar. What is the missing side length of rectangle JKLM?



6)

The two trapezoids shown are similar. Determine the missing side length. Show your work.

